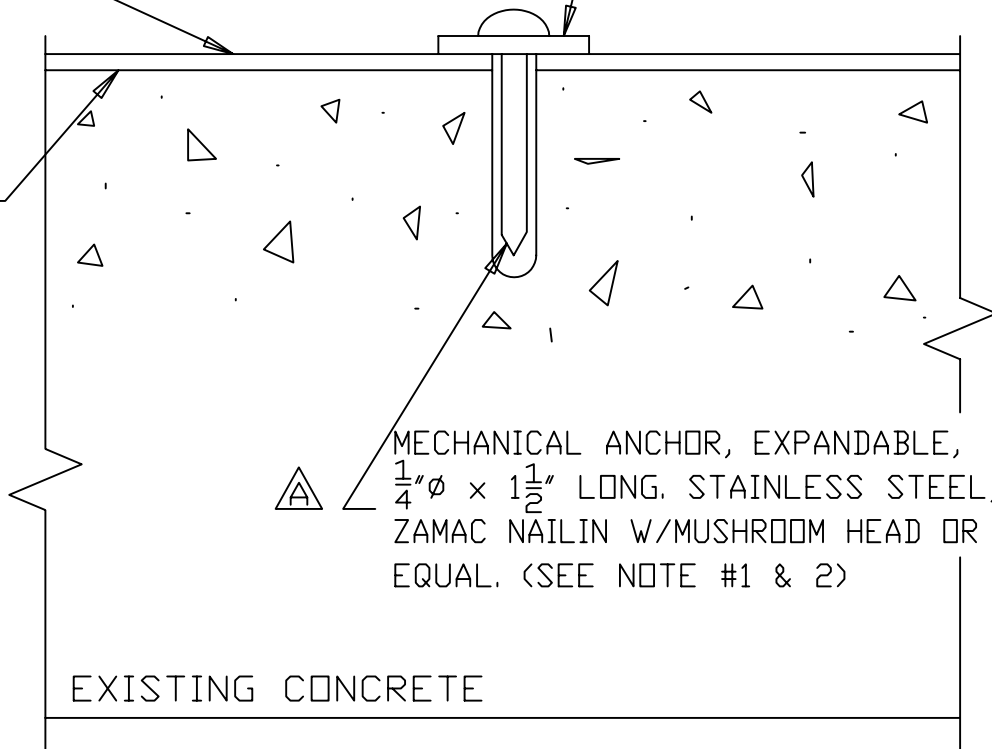


AMER-PLATE
PLAIN SHEET
 $\frac{3}{32}$ " THICK

$\frac{1}{4}$ " THK \times $1\frac{1}{2}$ " WIDE RIGID
PVC BATTEN STRIP
(SEE NOTE #3)

19Y ADHESIVE
SYSTEM



MECHANICAL ANCHOR, EXPANDABLE,
 $\frac{1}{4}$ " ϕ \times $1\frac{1}{2}$ " LONG. STAINLESS STEEL;
ZAMAC NAILIN W/MUSHROOM HEAD OR
EQUAL. (SEE NOTE #1 & 2)

EXISTING CONCRETE

NOTE:

1. DRILL $\frac{1}{4}$ " ϕ HOLES THROUGH LINER & ADHESIVE SYSTEM INTO CONCRETE. DEPTH OF HOLE TO BE APPROX. $\frac{1}{4}$ " LONGER THAN ANCHOR.
2. ANCHOR TO BE MINIMUM OF $1\frac{1}{2}$ " IN LENGTH & PLACED ON 12" CENTERS EACH WAY.
3. PLACE BATTEN STRIPS ON 12" CENTERS FULL LENGTH, ONE DIRECTION ONLY. PLACE AT TERMINAL EDGES ALL SIDES.

©Copyright 2003 All Rights Reserved Ameron International

Ameron PROTECTIVE LINING DIVISION

MECHANICAL ANCHORAGE OF
AMER-PLATE PLAIN SHEET TO
EXISTING CONCRETE



DRAWN

DPH

10-89

APPV'D

DPH

10-89

PLD-PS-040D

REV

1

11/92 DPH REMOVE NYLON & ACETAL