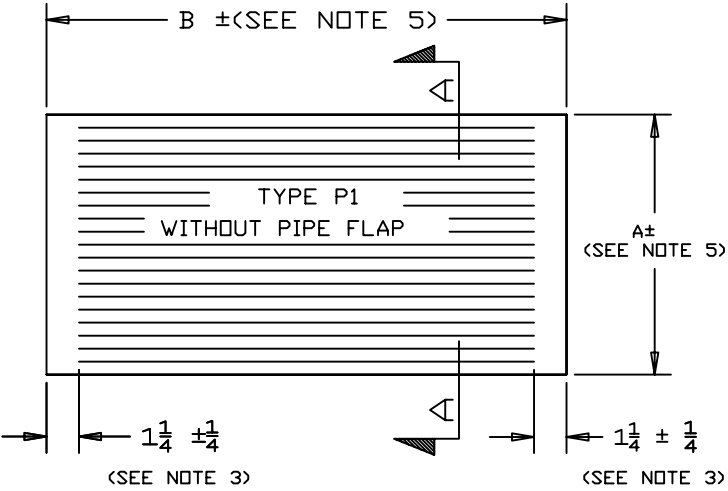
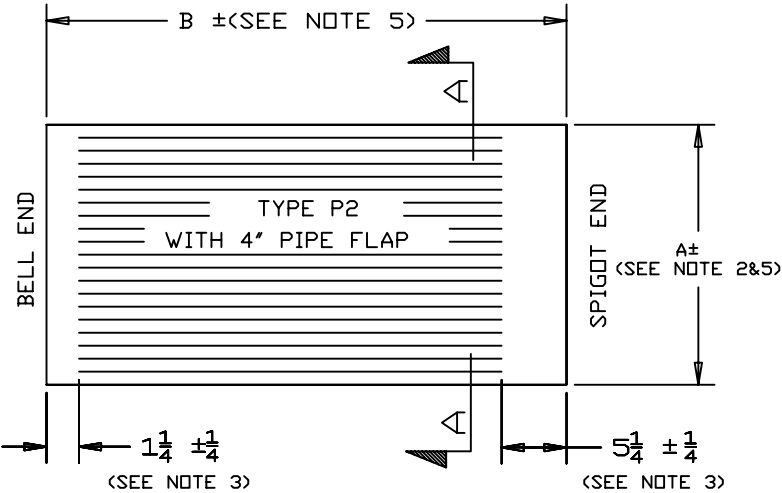
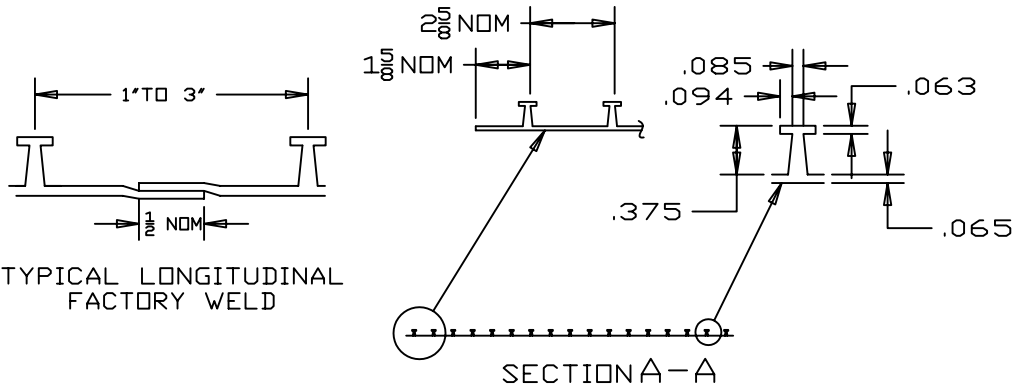


TYPE	I. D.	DEGREE COVERAGE	A	B	QUANTITY



- NOTES:
1. "A" AND "B" DIMENSIONS ARE PER CUSTOMER ORDER.
 2. SHEET IS EXTRUDED IN 48" WIDTHS. SHEETS WITH "A" DIMENSION GREATER THAN 48" WILL HAVE ONE OR MORE LONGITUDINAL FACTORY WELDS.
 3. END FLAPS ARE FABRICATED BY REMOVING LOCKING EXTENSIONS TO WITHIN 0.035" OF THE SURFACE OF THE MAIN SHEET. LENGTH OF FLAP DEPENDS ON HOW SHEET WILL BE USED.
 4. WIDTH OF EDGES DEPENDS ON HOW SHEET WILL BE USED.(SEE TL-003)
 5. TOLERANCE ON DIMENSIONS "A" AND "B" IS A RATIO OF ±1/4 FOR EACH 100 INCHES.



SYMBOL	REVISION	DATE	BY	APPV'D

Ameron PROTECTIVE LINING DIVISION
 EXAMPLE CUSTOMER DRAWING FOR
 FABRICATED T-LOCK PIPE SHEETS

DRAWN	P.K.	6-86	PLD-TL-002	REV
APPV'D				0