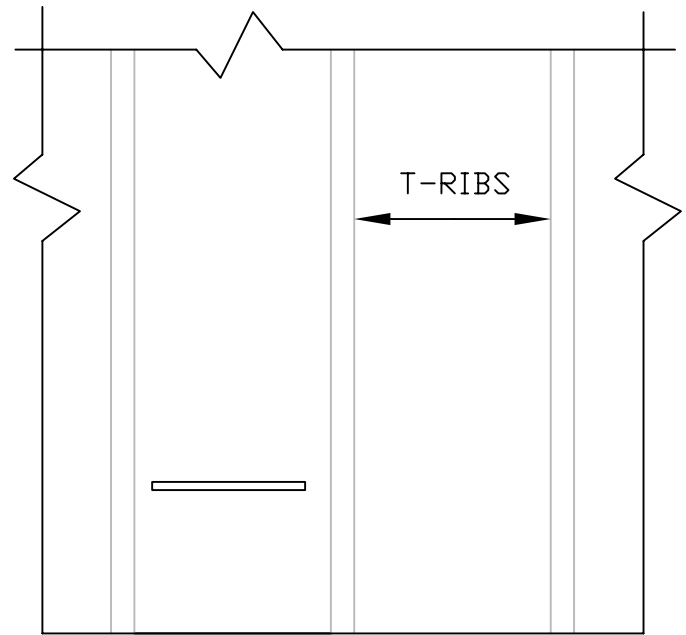
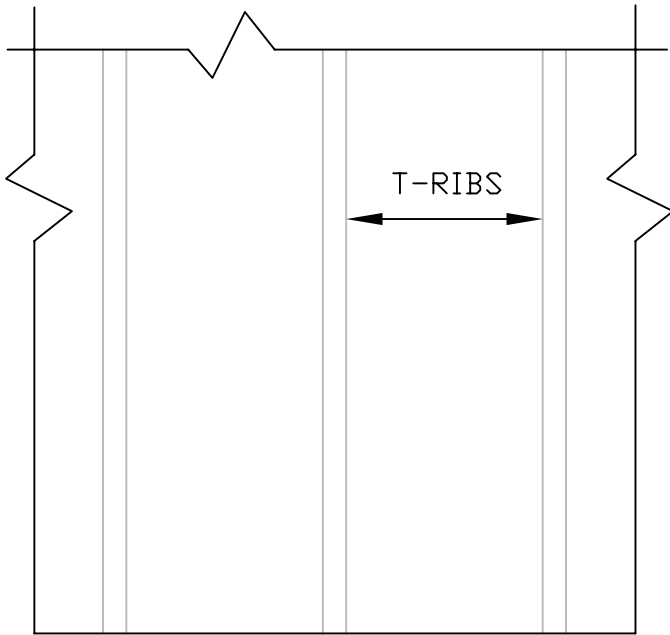
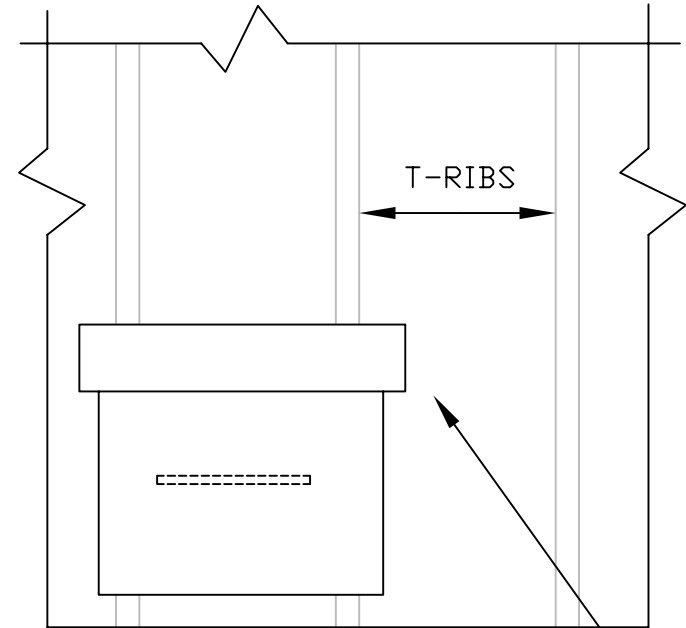
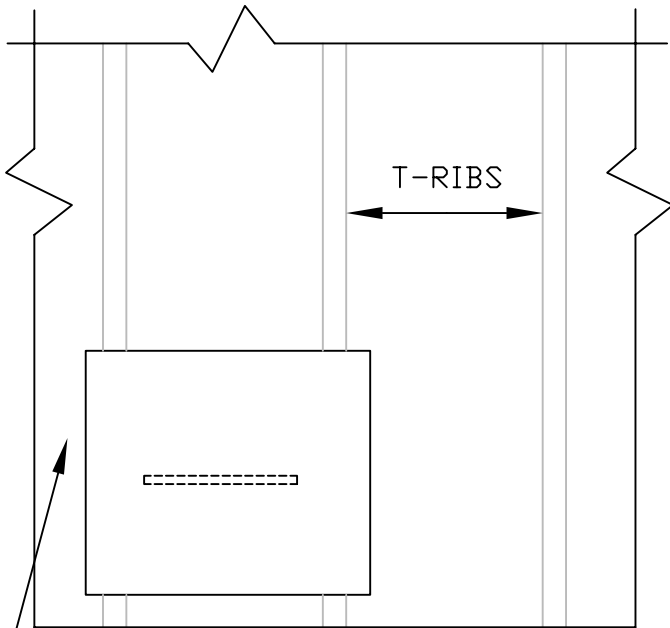


INSIDE OF T-LOCK LINED
BARREL SECTION

CUT SLOT BETWEEN RIBS ABOUT
2" FROM BOTTOM OF MANHOLE



BASE OF
MANHOLE



WELD THE TOP OF A 4"
PIECE OF JOINT STRIP
OVER THE SLIT.

1" WELD STRIP

NOTE: T-LOCK IS DESIGNED TO WITHSTAND 100' OF HYDROSTATIC HEAD. PILLOWING BETWEEN THE TEES IS A NORMAL OCCURANCE WHEN HYPROSTATIC HEAD IS PRESENT. THIS METHOD SHOULD ONLY BE USED IF THE PILLOWS ARE OBJECTIONAL.

Ameron PROTECTIVE LINING DIVISION

MANHOLE BARREL SECTION
WEEP SLIT DETAIL

DRAWN	JPG	3/07	PLD-TL-320	REV
APPV'D				0